

JCSU wireless connection information

Special note:

The information / instructions here apply **only to non-school issued laptops.**

Instructions:

To connect to the JCSU wireless network the following information is required:

SSID: SWLANb

Security Type: 802.1X /PEAP

Encryption Type: WEP

Network Authentication method: Microsoft: Protected EAP (PEAP)→ Secure Password (EAP-MSCHAP v2)

Network Type: Access Point / Infrastructure

Network Availability: All users with Network credentials

Additional information: username and password obtain from JCSU

Configuration note: Under **PEAP properties** “When connecting” make sure the check mark is off.

Under **EAP-MSCHAP v2 Properties** “Automatically use my windows logon name and password (domain if any)”, make sure the check mark is off.

The screen shots and instructions below provide the procedure to manually configure and connect to the JCSU wireless network using a Dell Latitude D630 / D830 with Windows Vista. The computer is NOT part of the JCSU domain.

Note: If you do not have a D630 / D830 with Windows Vista, please use the information above to configure your laptop.

To manually configure your laptop to connect to the JCSU wireless network do the following:

1. Go to **Network Sharing Center** select **Manage wireless networks**
2. Under **Manage wireless network that uses (wireless connections)** click **+Add** and enter the information as seen below and click **Next**
3. Click the **“security tab”** on **“SWLANb wireless network Properties”**

Manually connect to a wireless network

Enter information for the wireless network you want to add

Network name: SWLANb

Security type: 802.1x

Encryption type: WEP

Security Key/Passphrase: Display characters

Start this connection automatically

Connect even if the network is not broadcasting

Warning: If you select this option, your computer's privacy might be at risk.

Next Cancel

SWLANb Wireless Network properties

Connection Security

Name: SWLANb

SSID: SWLANb

Network Type: Access point

Network Availability: All users

Connect automatically when this network is in range

Connect to a more preferred network if available

Connect even if the network is not broadcasting

OK Cancel

SWLANb Wireless Network properties

Connection Security

Security type: 802.1X

Encryption type: WEP

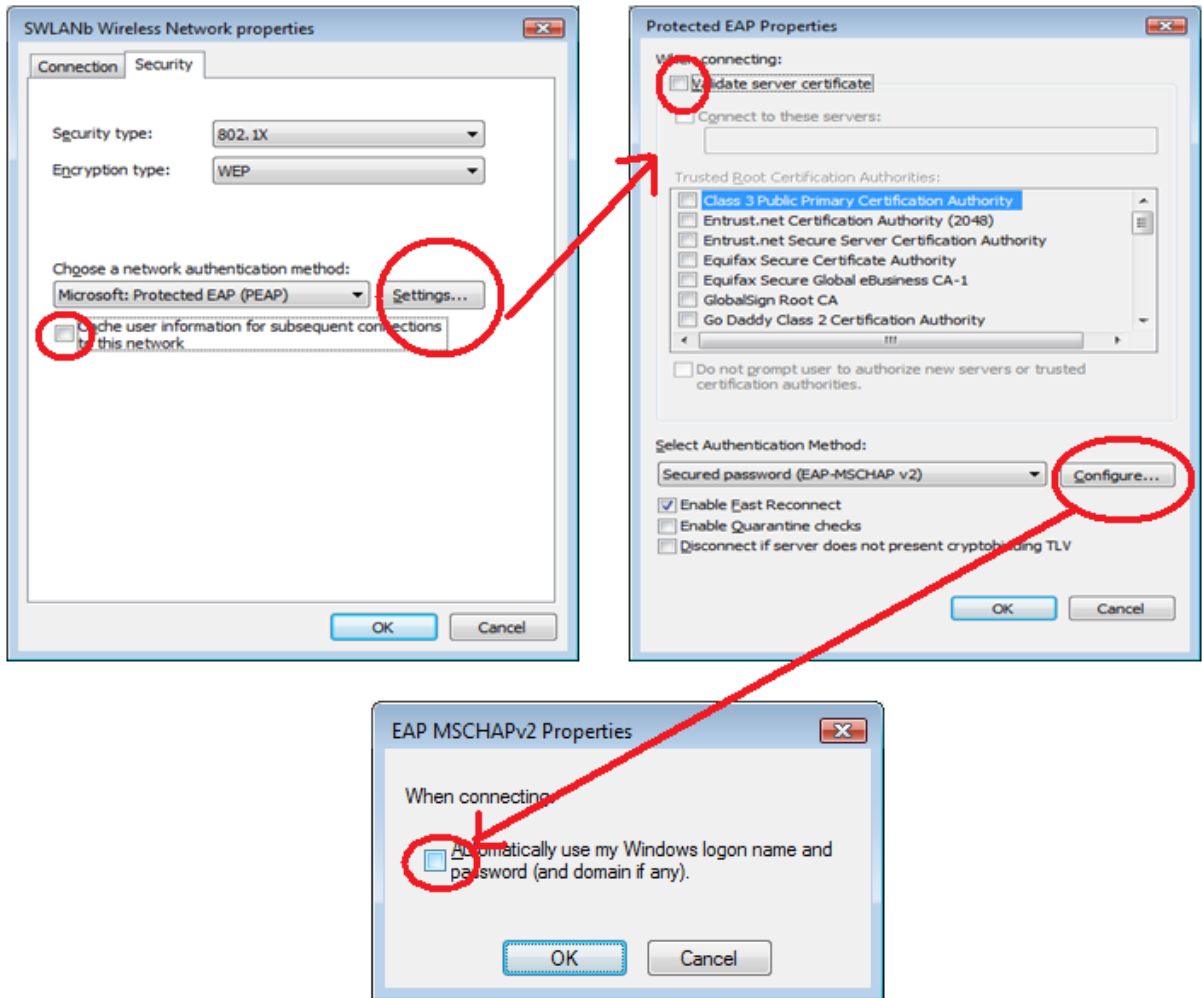
Choose a network authentication method:

Microsoft: Protected EAP (PEAP) Settings...

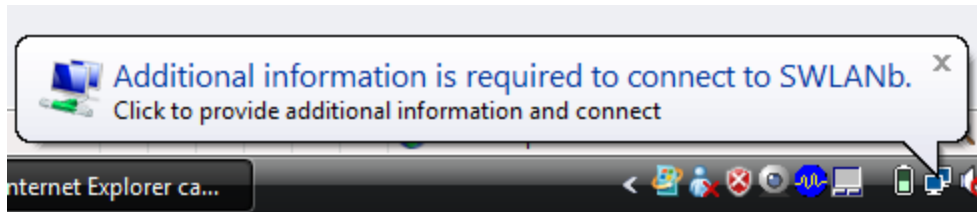
Cache user information for subsequent connections to this network

OK

4. Uncheck the “**cache user information for subsequent connections to this network**”
5. Click the “**Settings...**” button and Uncheck “**Validate server certificate**”
6. Click the “**configure...**” button on the “**Protected EAP Properties**” and Uncheck the “**Automatically use my windows logon name and password (and domain if any)**” check box.



7. Your configuration is now completed.
8. You should see a bubble as shown below indicating additional information is needed to connect to the network.



9. Please type your username and password in the format shown below. Example username should be typed in as **jcsu\myusername.** and your password is **your JCSU password**



The "Enter Credentials" dialog box features a header with the title "Enter Credentials" and a close button. Below the header is an illustration of a laptop, a globe, and a desktop monitor connected by green lines. The dialog contains three input fields: "User name:" with the text "jcsu\your jcsu username", "Password:" with ten black dots, and "Logon domain:" which is empty. At the bottom, there is a checkbox labeled "Save this user name and password for future use" which is unchecked. Two buttons, "OK" and "Cancel", are located at the bottom of the dialog.