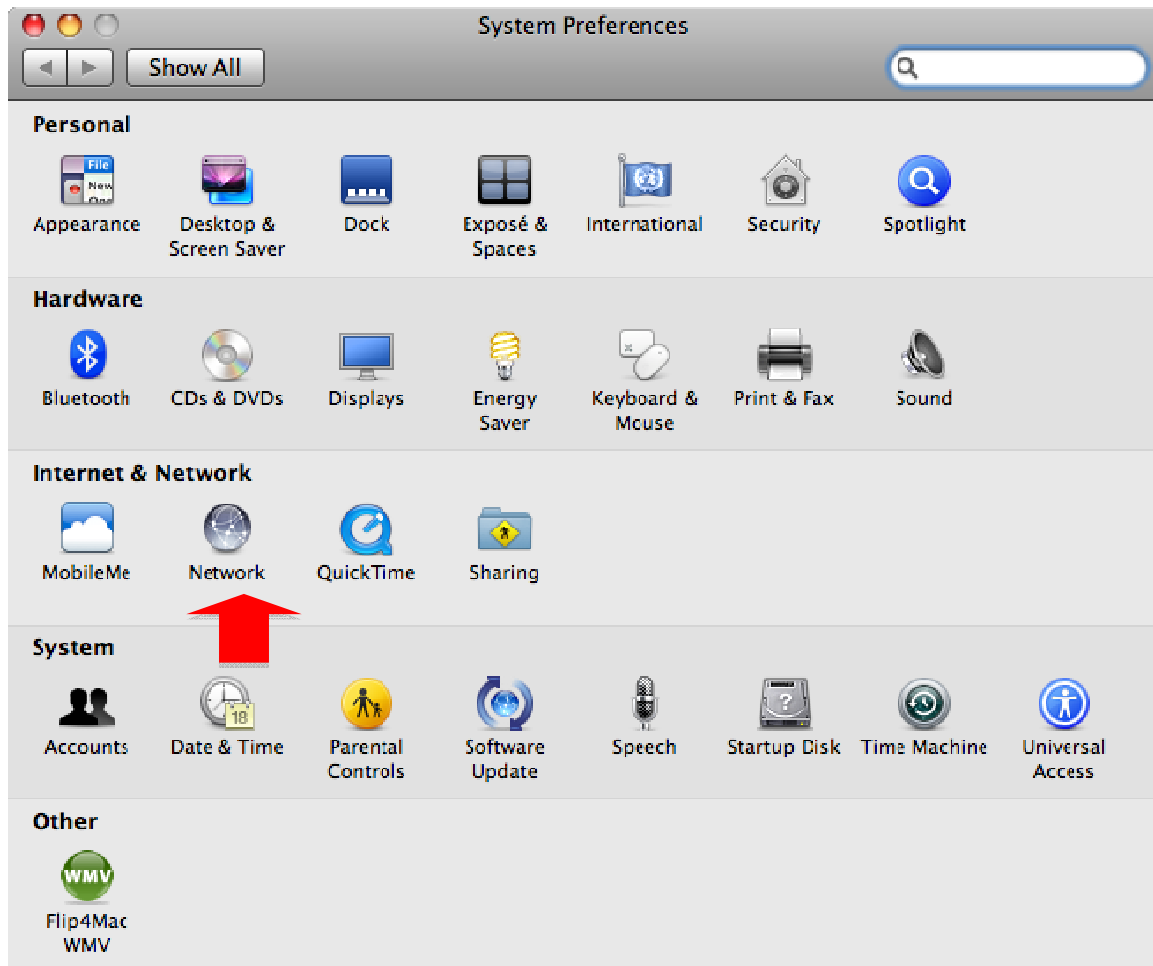


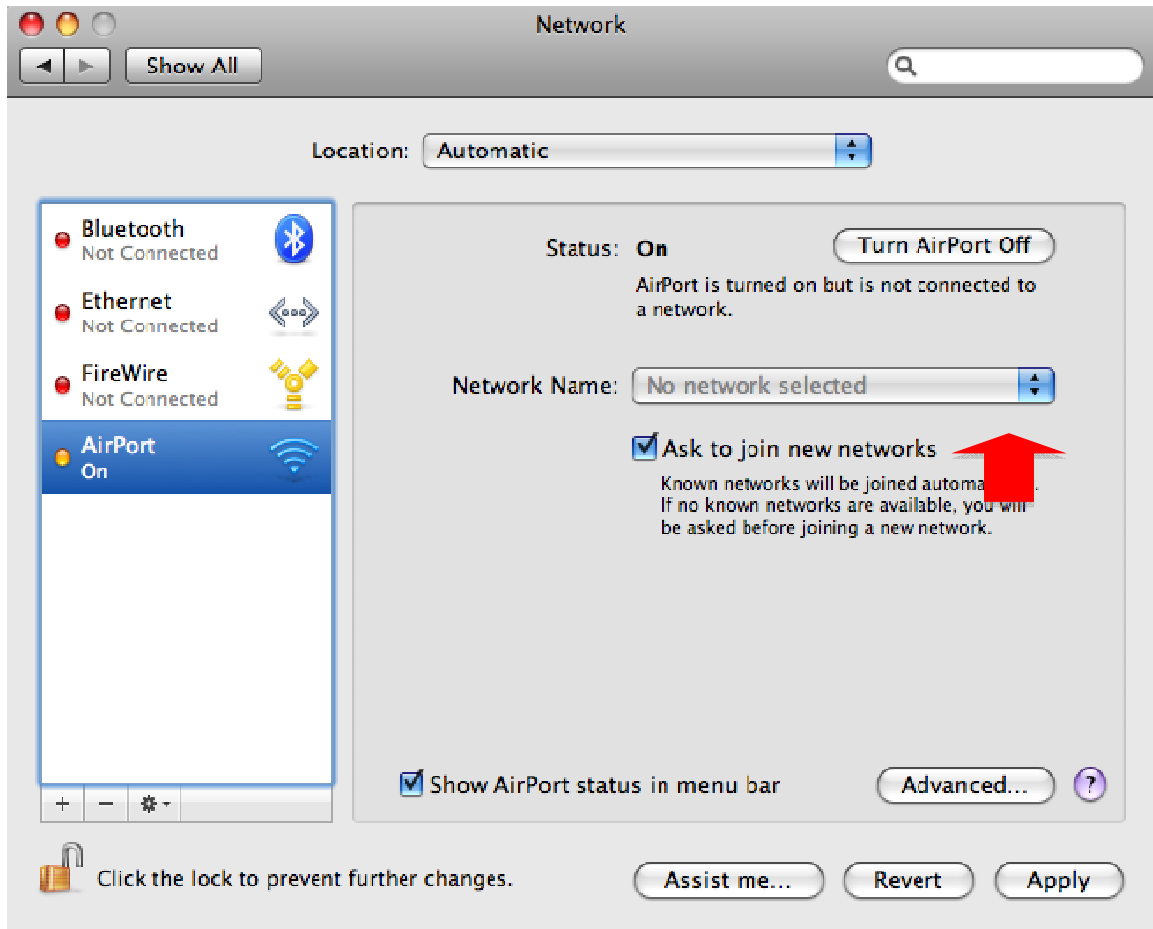
JCSU Wireless Configuration for Macintosh computers. Mac OS 10.5.8

1. You have to be logged into the computer as local administrator.

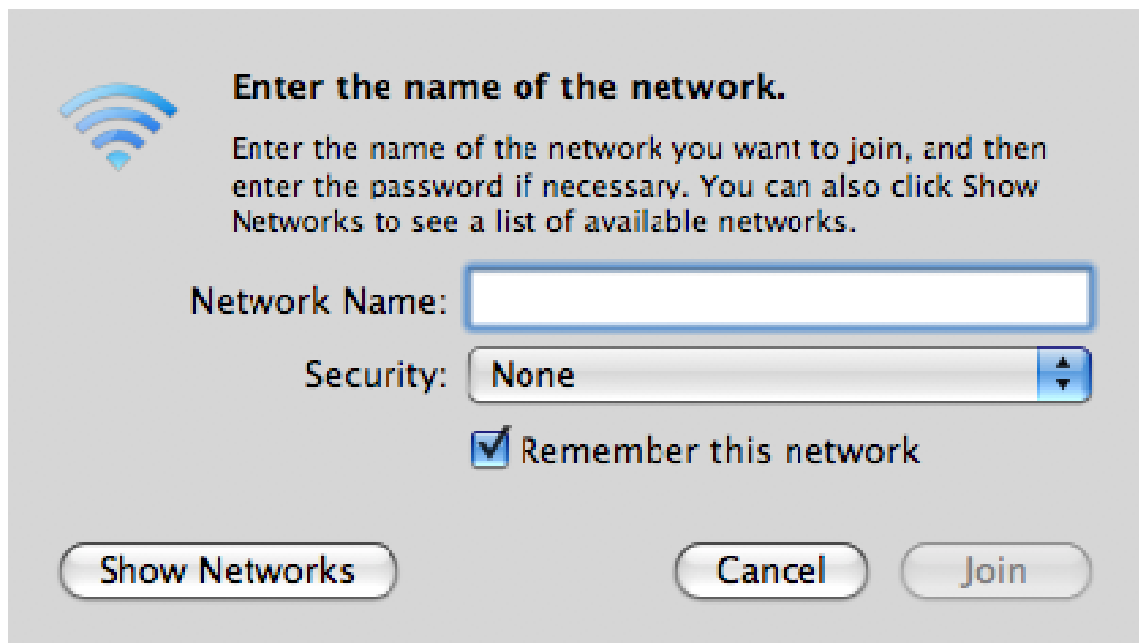
Go to the Apple menu and click on System Preferences then click on Network.



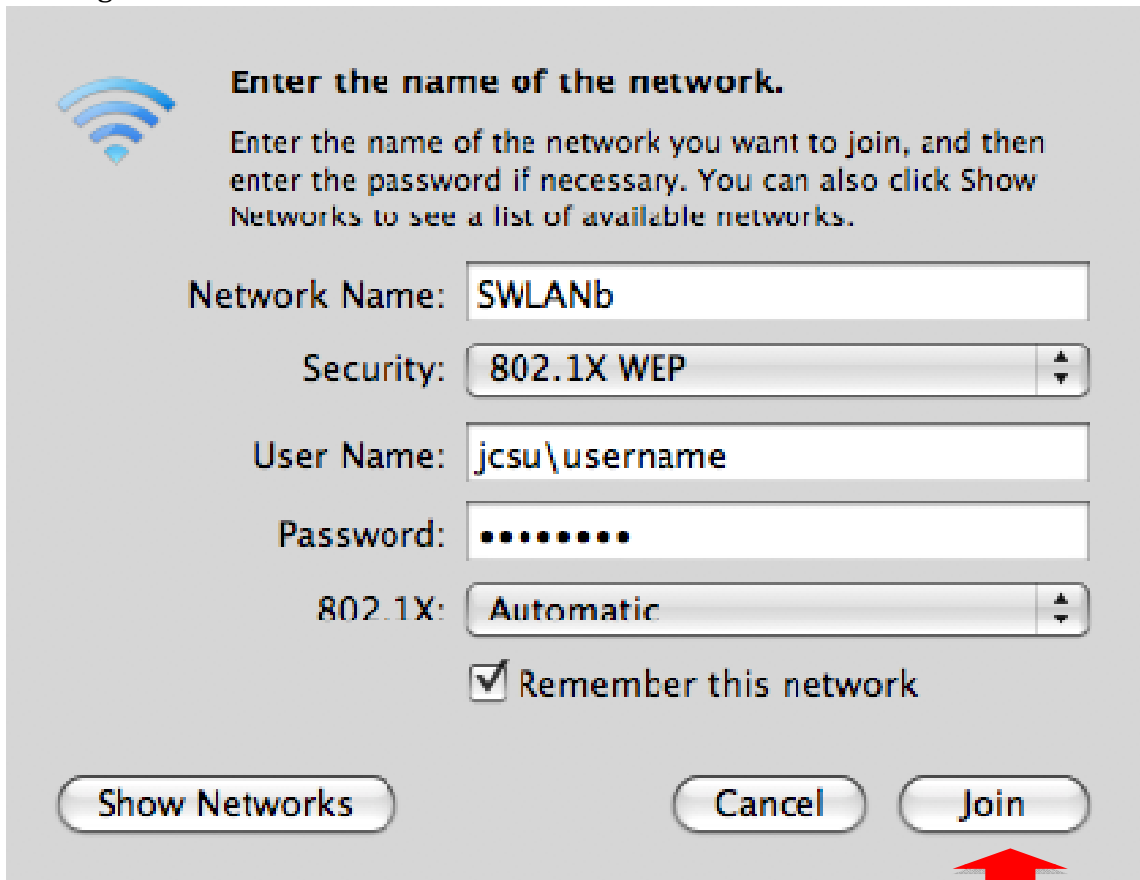
2. Click on the Network Name drop down menu and click on join other network.



3. The network identification window comes up.



4. Enter the following information:



Enter the name of the network.

Enter the name of the network you want to join, and then enter the password if necessary. You can also click Show Networks to see a list of available networks.

Network Name:

Security:

User Name:

Password:

802.1X:

Remember this network

A red arrow points to the "Join" button.

5. Click join

6. Click on show certificate



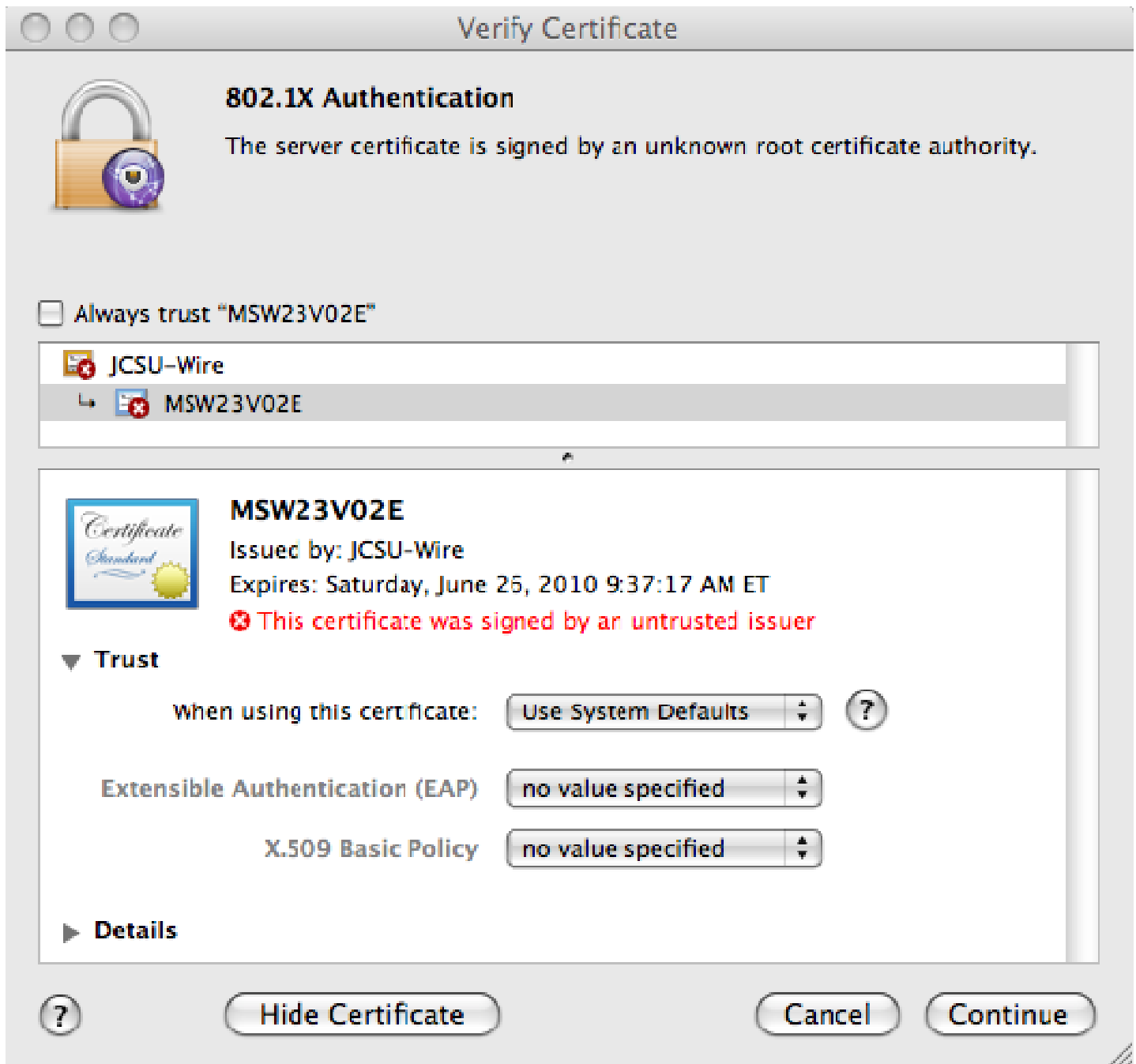
Verify Certificate

802.1X Authentication

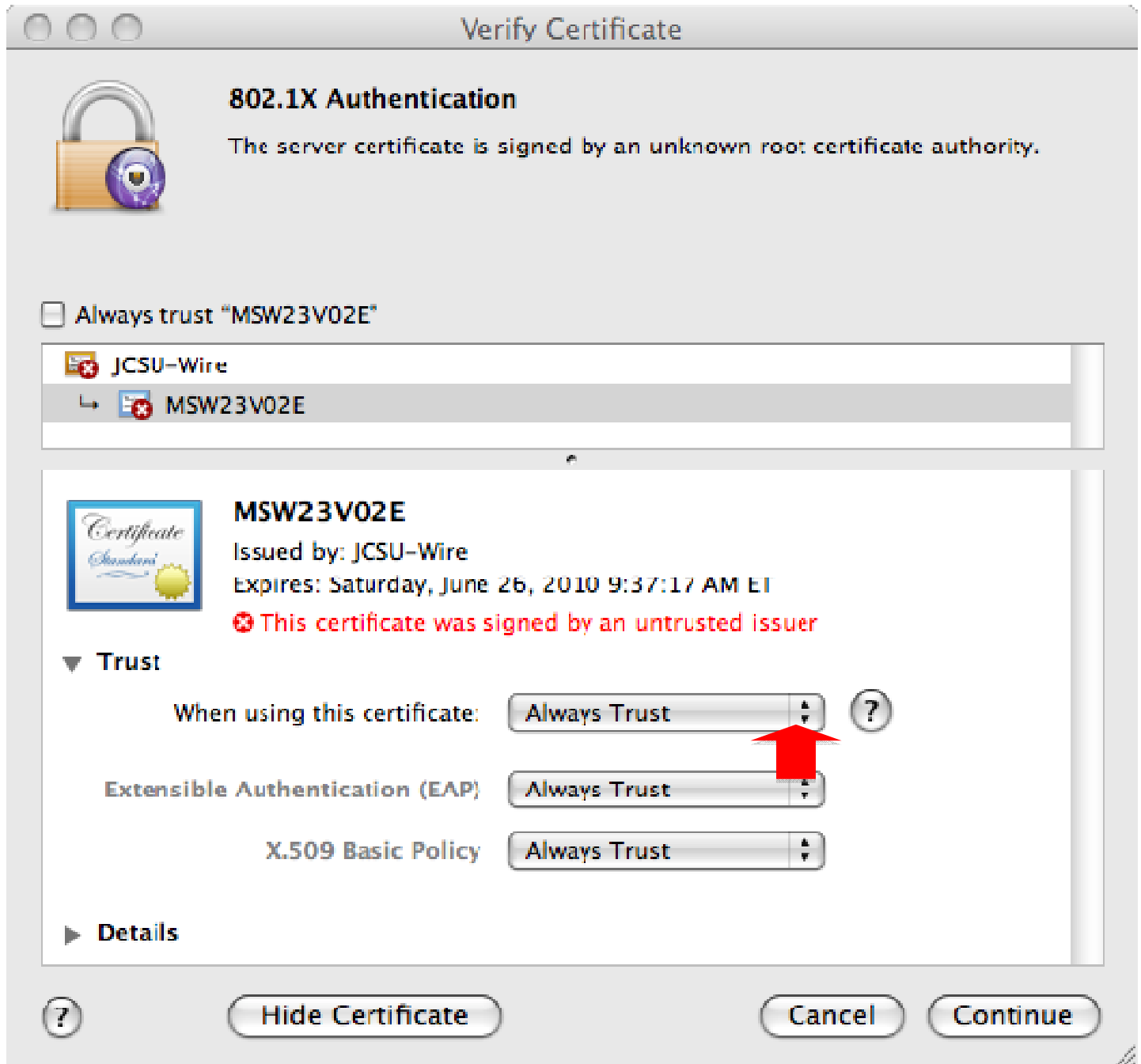
The server certificate is not trusted because there are no explicit trust settings.

A red box highlights the "Show Certificate" button, and a red arrow points to it from the right.

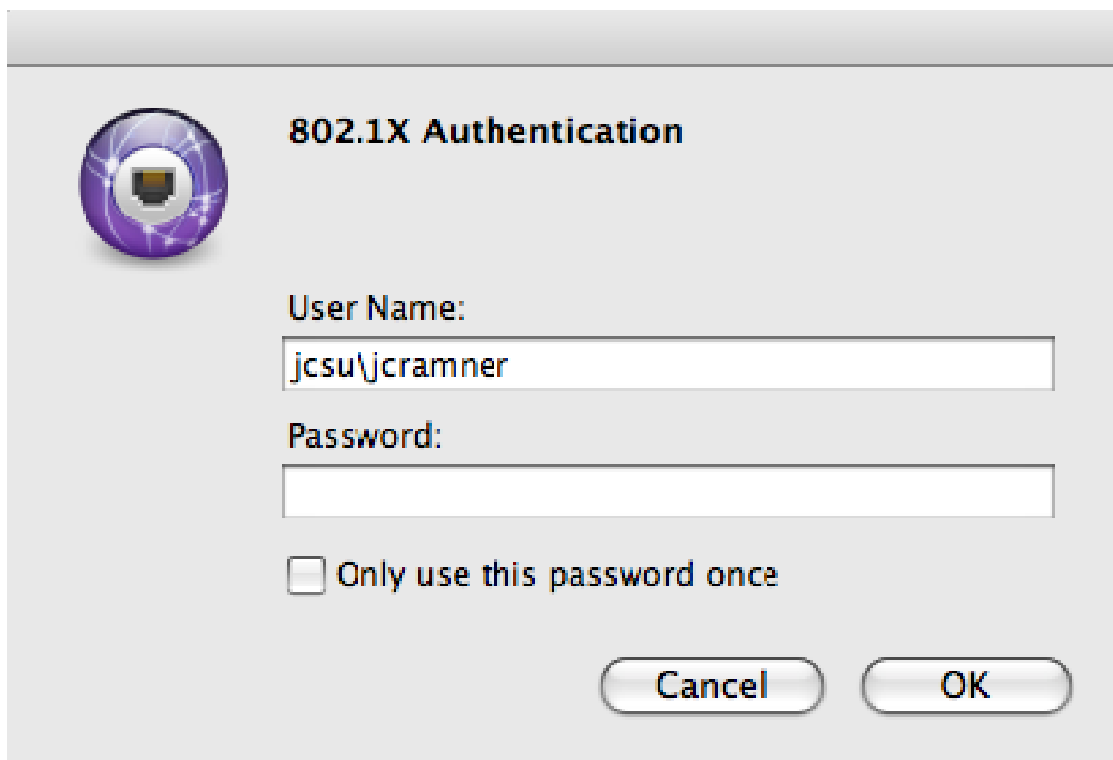
7. The Verify Certificate window opens:



8. Click on the drop down menu that says: When using this certificate: select Always Trust and click on continue.



9. Enter the local admin username and password to save the certificate settings. The Authentication window then appears. Enter your username and password just like it shows below and click OK.



You are now connected and should see the radio waves in black instead of gray:

